

MITSUBISHI

PROGRAMMABLE CONTROLLER

MELSEC-A

User's Manual

Positioning module type AD71S7 (Hardware)

INTRODUCTION

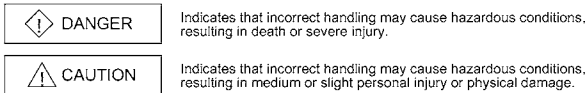
Thank you for choosing the Mitsubishi MELSEC-A Series of General Purpose Programmable Controllers. Please read this manual carefully so that the equipment is used to its optimum. A copy of this manual should be forwarded to the end User.



• SAFETY INSTRUCTIONS •

(Always read these instructions before using this equipment.)

Before using this product, please read this manual and the relevant manuals introduced in this manual carefully and pay full attention to safety to handle the product correctly. The instructions given in this manual are concerned with this product. For the safety instructions of the programmable logic controller system, please read the CPU module user's manual. In this manual, the safety instructions are ranked as "DANGER" and "CAUTION".



Note that the CAUTION level may lead to a serious consequence according to the circumstances. Always follow the instructions of both levels because they are important to personal safety.

Please save this manual to make it accessible when required and always forward it to the end user.

[Design Instructions]

◇ DANGER

- Provide a safety circuit outside the programmable logic controller so that the entire system will operate safely even when an external power supply error or PLC fault occurs. Failure to observe this could lead to accidents for incorrect outputs or malfunctioning.
 - Configure an emergency stop circuit and interlock circuit such as a positioning upper limit/lower limit to prevent mechanical damage outside the PLC.
 - The machine zero point return operation is controlled by the zero point return direction and zero point return speed data. Deceleration starts when the near-point dog turns ON. Thus, if the zero point return direction is incorrectly set, deceleration will not start and the machine will continue to travel. Configure an interlock circuit to prevent mechanical damage outside the PLC.
 - Set the parameters to the positioning system specifications. Make sure that the zero point return parameter and positioning data are within the parameter setting values.

[Startup/Maintenance Instructions]

△ CAUTION

- Never disassemble or modify the module. Failure to observe this could lead to trouble, malfunctioning, injuries or fires.
- Be sure to shut off all phases of the external power supply used in the system before cleaning before installing or removing the module. Failure to turn all phases OFF could lead to module trouble or malfunctioning.
- Before starting test operation, set the parameter speed limit value to the slowest value, and make sure that operation can be stopped immediately if a hazardous state occurs.
- Connect the battery correctly. Do not charge, disassemble, heat, throw into fire, short, or solder it. Incorrectly handling the battery may cause injury or fire due to heat buildup, burst, ignition, etc.

△ CAUTION

- Do not drop or impact the battery fitted to the module. To do so may damage the battery, causing the battery liquid to leak inside the battery. Dispose of the dropped or impacted battery without using it.
- Always make sure to touch the grounded metal to discharge the electricity charged in the body, etc., before touching the module. Failure to do so may cause a failure or malfunctions of the module.

[Precautions for use]

△ CAUTION

- Note that when the reference axis speed is designated for interpolation operation, the speed of the partner axis (2nd axis) may be larger than the set speed (larger than the speed limit value).
- When no parameters have been set or any one parameter is erroneous (outside the setting range), all parameter data are controlled as default values.

[Disposal Instructions]

△ CAUTION

- When disposing of the product, handle it as industrial waste.

[Transportation Instructions]

△ CAUTION

- When a lithium-containing battery is to be transported, it must be handled in conformance to the transportation restrictions.

[Design Instructions]

△ CAUTION

- Do not bundle or adjacently lay the control wire or communication cable with the main circuit or power wire. Separate these by 100mm or more. Failure to observe this could lead to malfunctioning caused by noise.

[Mounting Instructions]

△ CAUTION

- Use the PLC within the general specifications environment given in this manual. Using the PLC outside the general specification range environment could lead to electric shocks, fires, malfunctioning, product damage or deterioration.
- Always securely insert the module latches at the bottom of the module into the fixing holes on the base unit. (Always screw the AnS Series module onto the base unit with the specified torque.) Improper mounting of the module could lead to malfunctioning, faults or dropping.
- Securely connect the drive unit connector and peripheral device connector to the module connectors. Improper connection could lead to a connection fault, and to incorrect inputs and outputs.
- When not connecting the drive unit, always install a cover on the connector section. Failure to observe this could lead to malfunctioning.

[Wiring Instructions]

◇ DANGER

- Always confirm the terminal layout before connecting the wires to the module.
- Make sure that foreign matter such as cutting chips and wire scraps does not enter the module. Failure to observe this could lead to fires, faults or malfunctioning.

[Startup/Maintenance Instructions]

◇ DANGER

- Be sure to shut off all phases of the external power supply used in the system before cleaning or tightening the screws. Failure to turn all phases OFF could lead to electric shocks.

Conformation to the EMC and Low Voltage Directives

For details on making Mitsubishi PLC conform to the EMC and low voltage directives when installing it in your product, please refer to Chapter 3, "EMC Directive and Low Voltage Instruction" of the using PLC CPU module User's Manual (Hardware). The CE logo is printed on the rating plate on the main body of the PLC that conforms to the EMC and low voltage directives.

1. GENERAL DESCRIPTION

1. GENERAL DESCRIPTION

This manual describes the specifications, nomenclature and I/O interface of the AD71S7 type positioning module (hereafter called the AD71S7). Confirm that all of the following components are included in the package.

Component	Quantity
AD71S7 positioning module	1
External wiring connector (Type) Connector Connector cover	1

1.1 Detailed Manual

- AD71(S1/S2/S7), A1SD71-S2(S7) Positioning Module User's Manual (IB-66563)

1.2 Related Manual

- Teaching Unit for positioning module type AD71TU (Packed with AD71TU) Operation Manual (IB-66067)
- SW0GP-AD71P (for Positioning Module) Operating Manual (IB-66099) (Packed with SW0GP-AD71P)
- SW0IX-AD71PE (for Positioning module) Operating Manual (IB-66508) (Packed with SW0IX-AD71PE)

2. PERFORMANCE SPECIFICATIONS

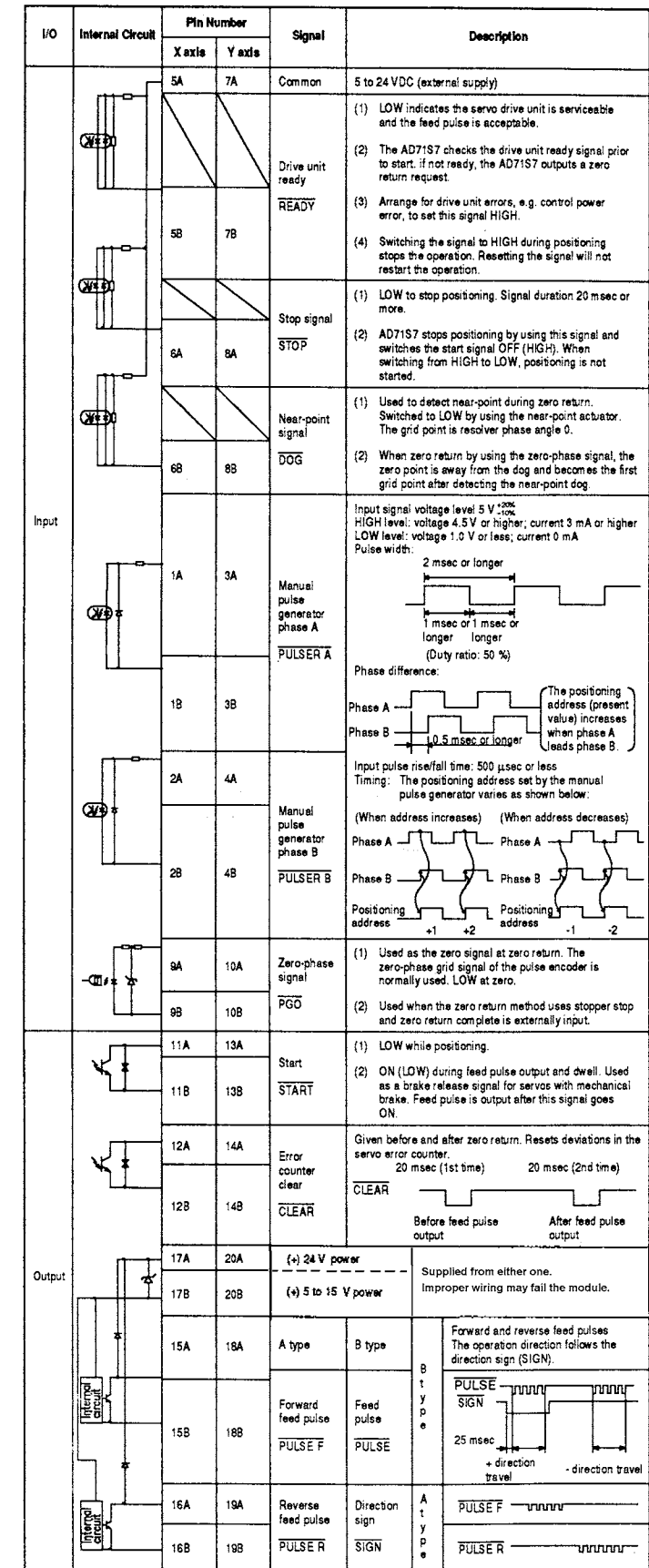
2. PERFORMANCE SPECIFICATIONS

Item	Performance and Specifications
Number of I/O points	32 points
Number of control axes	2 (simultaneous or independent)
Interpolation	Linear interpolation (for simultaneous 2 axes)
Positioning data	Capacity: 400 points per axis
	Setting method: Input from peripheral device or sequence program
RAM memory backup	15 minutes without battery (25 °C) Lithium battery guarantees power failure backup for a total of 300 days. Battery guaranteed for five years. Lithium content of a lithium battery: 0.48g
Positioning	Method: Absolute and/or incremental method
	Positioning units: 1 to 16,252,928 (PULSE) Max. 162 (m) (command unit: 0.1 to 10 μm/PLS) Max. 16200 (inch) (command unit: 1 × 10 ⁻⁵ to 0.001 inch/PLS) Max. 16200 (degree) (command unit: 1 × 10 ⁻⁵ to 0.001 degree/PLS)
	Positioning speed: 10 to 200000 (PLS/sec) (command unit: 10 PLS/sec) 10 to 120000 (mm/min) (command unit: 10 mm/min) 1 to 12000 (inch/min) (command unit: 1 inch/min) 1 to 12000 (degree/min) (command unit: 1 degree/min)
	Acceleration and deceleration: Automatic trapezoidal acceleration and deceleration
	Acceleration and deceleration times: 64 to 4999 (msec)
	Backlash compensation: 0 to 65535 × position command unit (0 to 255 pulse if unit is PULSE)
Error compensation: Mechanical system error compensation function	
Zero return: With zero address change function. Zero return direction and speed can be selected.	
Jog operation function: Jog operation by jog start signal input.	
Inching function: Operation using manual pulse generator.	
M function: M code output	
Internal current consumption: 5 VDC, 1.5 A	
External supply voltage, current: 4.75 to 26.4 V, Max. 50 mA	
Size: 250(H) × 37.5(W) × 121(D) (9.84 × 1.48 × 4.76) [mm (inch)]	
Weight: 0.63 kg	

For other general specifications, refer to the User's Manual for the relevant PC CPU.

3. I/O INTERFACE

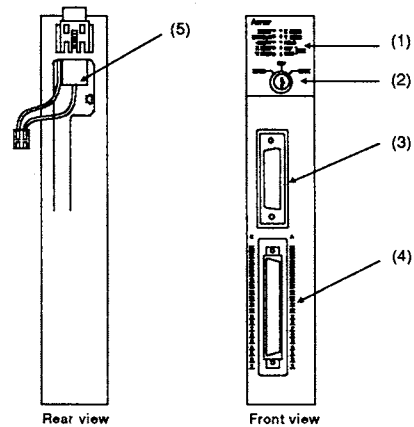
3. I/O INTERFACE



Select the A or B type by parameter setting.

4. NOMENCLATURE

4. NOMENCLATURE



No.	Name	Explanation																		
(1)	LED indicator READY <input type="checkbox"/> X ZERO <input type="checkbox"/> SERVO-X <input type="checkbox"/> Y ZERO <input type="checkbox"/> -ERR <input type="checkbox"/> HOLD <input type="checkbox"/> X BUSY <input type="checkbox"/> BAT <input type="checkbox"/> Y BUSY <input type="checkbox"/> WDT <input type="checkbox"/> ERR	<table border="1"> <thead> <tr> <th>LED</th> <th>Contents</th> </tr> </thead> <tbody> <tr> <td>READY</td> <td>Lights when the AD71S7 ready signal goes ON.</td> </tr> <tr> <td>SERVO -ERR</td> <td>Lights when the READY signal from the servo unit for the X or Y axis goes OFF.</td> </tr> <tr> <td>X BUSY</td> <td>Lights when the X-axis BUSY signal goes ON.</td> </tr> <tr> <td>Y BUSY</td> <td>Lights when the Y-axis BUSY signal goes ON.</td> </tr> <tr> <td>X ZERO</td> <td>Lights when the X-axis zero return request signal goes ON.</td> </tr> <tr> <td>Y ZERO</td> <td>Lights when the Y-axis zero return request signal goes ON.</td> </tr> <tr> <td>HOLD</td> <td>Lights when there is an AD71S7 hardware fault.</td> </tr> <tr> <td>BAT WDT ERR</td> <td>Lights when the battery error signal or WDT error signal goes ON.</td> </tr> </tbody> </table>	LED	Contents	READY	Lights when the AD71S7 ready signal goes ON.	SERVO -ERR	Lights when the READY signal from the servo unit for the X or Y axis goes OFF.	X BUSY	Lights when the X-axis BUSY signal goes ON.	Y BUSY	Lights when the Y-axis BUSY signal goes ON.	X ZERO	Lights when the X-axis zero return request signal goes ON.	Y ZERO	Lights when the Y-axis zero return request signal goes ON.	HOLD	Lights when there is an AD71S7 hardware fault.	BAT WDT ERR	Lights when the battery error signal or WDT error signal goes ON.
		LED	Contents																	
		READY	Lights when the AD71S7 ready signal goes ON.																	
		SERVO -ERR	Lights when the READY signal from the servo unit for the X or Y axis goes OFF.																	
		X BUSY	Lights when the X-axis BUSY signal goes ON.																	
		Y BUSY	Lights when the Y-axis BUSY signal goes ON.																	
		X ZERO	Lights when the X-axis zero return request signal goes ON.																	
		Y ZERO	Lights when the Y-axis zero return request signal goes ON.																	
		HOLD	Lights when there is an AD71S7 hardware fault.																	
		BAT WDT ERR	Lights when the battery error signal or WDT error signal goes ON.																	
(2)	Keyswitches	M.PRO: Sets memory protect for the setting data and positioning data areas.																		
		OFF: Cancels memory protect for the setting data and positioning data areas.																		
		LOCK: Prohibits a pulse chain output from the AD71S7.																		
(3)	RS-422 connector	Used for connections with a peripheral device such as an A6GPP, A6PHP, A7PHP, A7HGP, A7LMS, and AD71TU.																		
(4)	40 pin connector	Used for connections with a drive unit. The following figure shows the pin layout of the external wiring connector supplied as an accessory. Make wire connections according to the IO interface. Pin arrangement seen from the connection side Connection pins include A1 to A20 and B1 to B20.																		
		For backup of positioning data Always connect the battery leads before using the AD71S7. + side lead line (red) - side lead line (blue) A6BAT																		
(5)	Battery																			

5. HANDLING INSTRUCTION

5. HANDLING INSTRUCTION

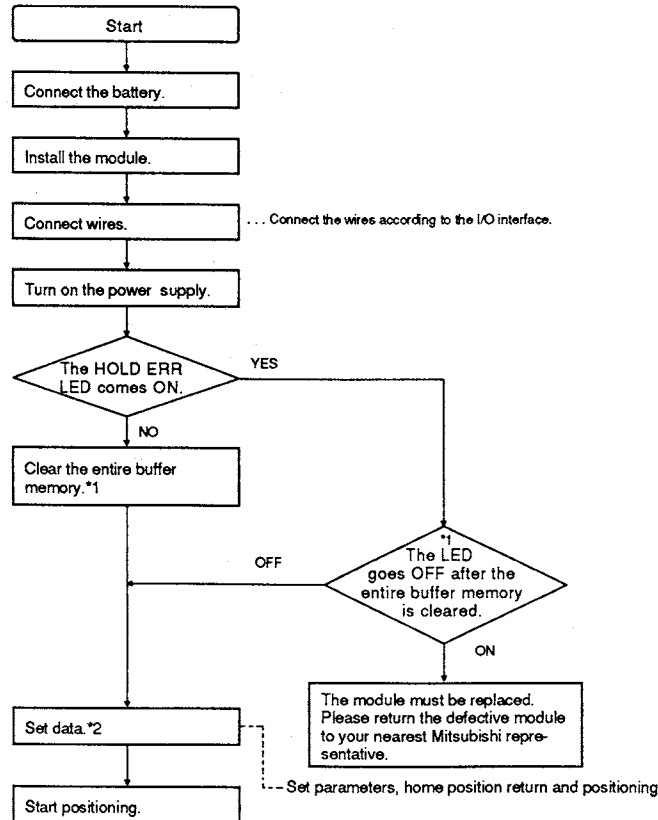
This section explains the handling (installation preparations) and nomenclature of the AD71S7.

- Since the body case is made of plastic, protect the AD71S7 from dropping and sudden impacts.
- Take care not to allow conductive debris, such as wire scraps generated during wiring or chips produced by drilling, to drop into the module. If debris does get into the module, remove it.
- Turn the PC PU power supply OFF before installing or removing the unit to or from the base.
- Turn the PC CPU and drive module power supply OFF before connecting or disconnecting the drive unit connector.
After confirming the correct insertion direction, insert the connector directly from the front. Then, tighten the two fixing screws.
When the drive unit is not connected, keep the connector area cover closed.
- When the AD71S7 is not BUSY, connect a peripheral device to the AD71S7.
After confirming the correct insertion direction, insert the connector directly from the front. Then tighten the two fixing screws.
When a peripheral device is not connected, keep the connector area cover closed.

6. MODULE START-UP

6. MODULE START-UP

Shown below is the AD71S7 start-up procedure. For details, consult the AD71(S1/S2/S7) or AD71S7-S2(S7) Type Positioning Module User's Manual.

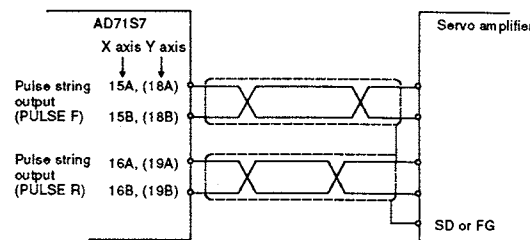


- *1: Clear the entire buffer memory from a peripheral device or by using a sequence program.
*2: Even if using only the X-axis or only the Y-axis, write parameters and zero return data for the axis that is not used as well as the one that is.
If an attempt is made to execute a zero return without having written this data, an error will occur.

7. LOADING AND INSTALLATION

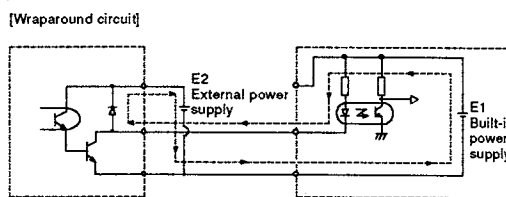
7. LOADING AND INSTALLATION

- When there is a lot of noise between the AD71S7 and servo amplifier, provide wiring from the pulse string output terminal from the AD71S7 using shielded twisted-pair cable that is different from other shielded cables.



- 24 VDC wiring notes

When a servo drive unit has a built-in power supply of 24 VDC, a wraparound circuit is made by the state of a power supply. A malfunction will occur if a separate power supply is supplied externally. Therefore, do not use the built-in power supply and external power supply together.

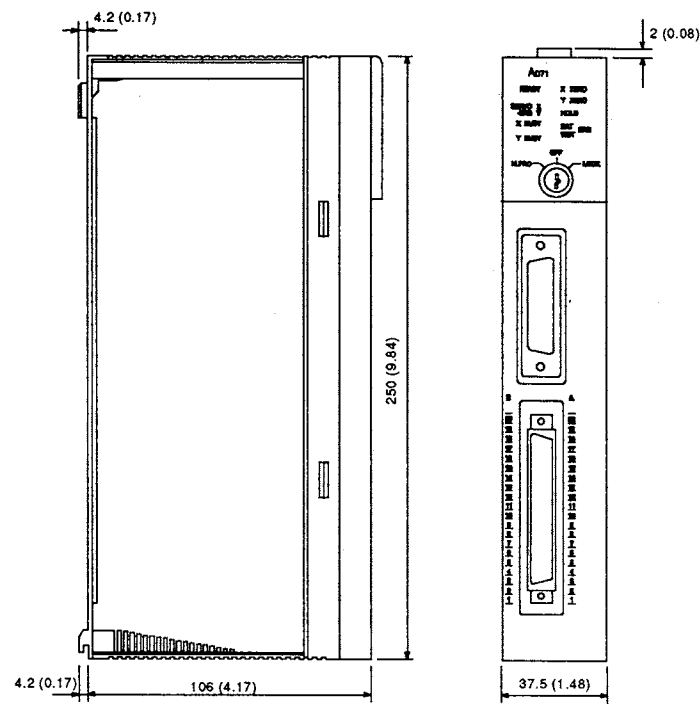


E1 > E2

Even if the pulse output of AD71S7 is OFF, the power supply flows in a servo unit pulse input line.

8. OUTSIDE DIMENSIONS

8. OUTSIDE DIMENSIONS



Unit: mm (inch)

Appendix 1 Transportation Precautions

When transporting lithium batteries, make sure to treat them based on the transport regulations.

Appendix 1.1 Controlled Models

The batteries for A1S/HCPU (including memory cards) is classified as follows:

Product Name	Model	Product supply status	Classification for transportation
A series battery	A6BAT	Lithium battery	Non-dangerous goods

Appendix 1.2 Transport Guidelines

Comply with IATA Dangerous Goods Regulations, IMDG code and the local transport regulations when transporting products after unpacking or repacking, while Mitsubishi ships products with packages to comply with the transport regulations.
Also, contact the transporters.

Warranty

Mitsubishi will not be held liable for damage caused by factors found not to be the cause of Mitsubishi, machine damage or lost profits caused by faults in the Mitsubishi products; damage, secondary damage, accident compensation caused by special factors unpredictable by Mitsubishi; damages to products other than Mitsubishi products; and to other duties.

For safe use

- This product has been manufactured as a general-purpose part for general industries, and has not been designed or manufactured to be incorporated in a device or system used in purposes related to human life.
- Before using the product for special purposes such as nuclear power, electric power, aerospace, medicine or passenger movement vehicles, consult with Mitsubishi.
- This product has been manufactured under strict quality control. However, when installing the product where major accidents or losses could occur if the product fails, install appropriate backup or failsafe functions in the system.

Country/Region	Sales office/Tel	Country/Region	Sales office/Tel
U.S.A	Mitsubishi Electric Automation Inc. 500 Corporate Woods Parkway Vernon Hills, IL 60061 Tel: +1-847-478-2100	Hong Kong	Ryoden Automation Ltd. 10th Floor, Manulife Tower, 169 Electric Road, North Point, HongKong Tel: +852-2887-8870
Brazil	MELCO-TEC Rep. Com. e Assessoria Tecnica Ltda. Rua Correia Dias, 184, Edificio Paraiso Trade Center-8 andar Paraiso, Sao Paulo, SP Brazil Tel: +55-11-5908-8331	China	Ryoden Automation Shanghai Ltd. Instrumentation Plaza 103 Cao Bao Rd. Shanghai 200233 China Tel: +86-21-6120-0808
Germany	Mitsubishi Electric Europe B.V. German Branch Gothaer Strasse 8 D-40880 Ratingen, GERMANY Tel: +49-2102-486-0	Taiwan	Setuoy Enterprise Co., Ltd. 6F., No. 105 Wu-Kung 3rd RD, Wu-Ku Hsiang, Taipei Hsine, Taiwan Tel: +886-2-2299-2499
U.K	Mitsubishi Electric Europe B.V. UK Branch Travellers Lane, Hatfield, Herts., AL10 8XB, UK Tel: +44-1707-276100	Korea	HAN NEUNG TECHNO CO. LTD. 1F Dong Seo Game Channel Bldg., 660-11, Deungchon-dong Kangseok-ku, Seoul, Korea Tel: +82-2-3650-9552
Italy	Mitsubishi Electric Europe B.V. Italian Branch Centro Dir. Colleoni, Pal. Perseo-Ingr 2 Via Paraiso 12, 20041 Agrate B., Milano, Italy Tel: +39-039-6053344	Singapore	Mitsubishi Electric Asia Pte. Ltd. 307 Alexandra Road #05-01/02, Singapore 159943 Tel: +65-6473-2308
Spain	Mitsubishi Electric Europe B.V. Spanish Branch Carretera de Rubi 76-80 08190 Sant Cugat del Valles, Barcelona, Spain Tel: +34-93-565-3131	Thailand	F. A. Tech Co. Ltd. 898/28, 29, 30 S.V. City Building Office Tower 2 Floor 17-18 Rama 3 Road, Bangkokpang, Yannawa, Bangkok 10120 Tel: +66-2-682-6522
France	Mitsubishi Electric Europe B.V. French Branch 25 Boulevard des Bouvels, F-92741 Nanterre Cedex, France TEL: +33-1-5568-5568	Indonesia	P. T. Autotekniko SUMBER MAKMUR Jl. Muara Karang Selatan Blok a Utara No. 1 Kav. No. 11 Kawasan Industri/Perdagangan Jakarta - Utara 14440 Tel: +62-21-663-0833
South Africa	Circuit Breaker Industries LTD. Tripswitch Drive, Elandsfontein Gauteng, South Africa Tel: +27-11-928-2000	India	Messung Systems Pvt.Ltd. Electronic Sadan NO.111 Unit No15, M.I.D. C. BHOSARI, PUNE-411026, India Tel: +91-20-712-2807
		Australia	Mitsubishi Electric Australia Pty. Ltd. 348 Victoria Road, PostalBag, No 2, Rydalmere, N.S.W. 2116, Australia Tel: +61-2-9584-7777

MITSUBISHI ELECTRIC CORPORATION

HEAD OFFICE: 1-1-1 OFFICE TOWER 2 NIPPARU CHUO-KU, NAGATO, JAPAN

INDONESIA BRANCH: 1-11 WILIS KAWANAN INDUSTRI UTARA JAKARTA, INDONESIA

When exported from Japan, this manual does not require application to the Ministry of Economy, Trade and Industry for service transaction permission.

Specifications subject to change without notice.
Printed in Japan on recycled paper.